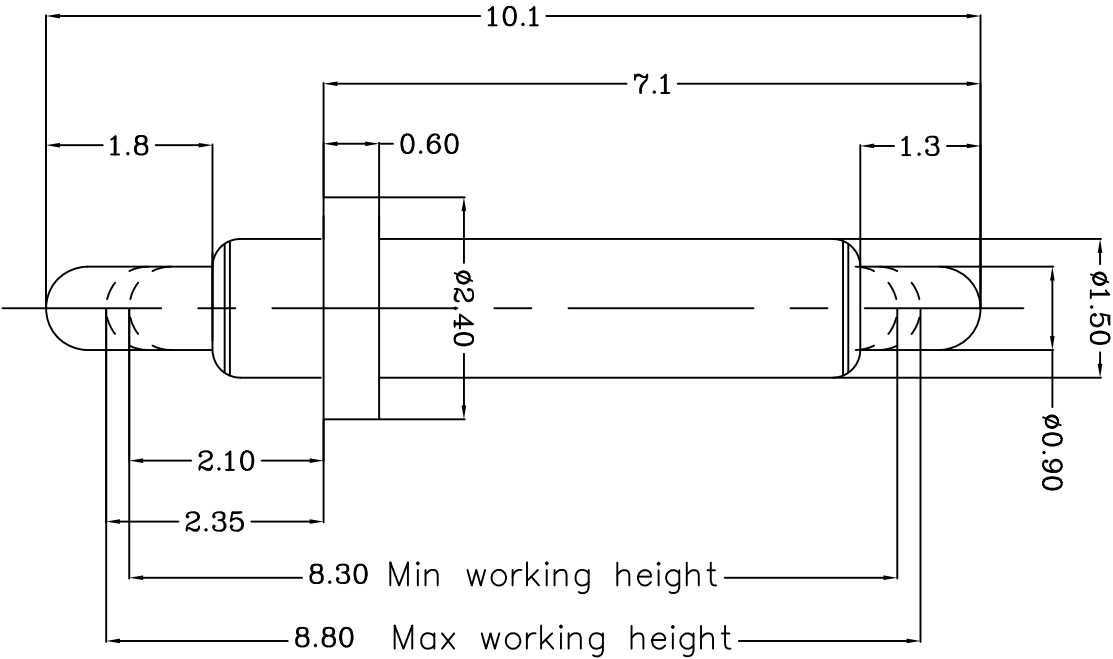


DIST  
---  
DIST  
---



Item	Part name	Qty/Ed	Material	Finish
1	Body	1	Leaded Brass	Au 0.1um plating Ni 1.4um
2	Plunger	1	Leaded Brass	Au 0.4um plating Ni 1.4um
3	Spring	1	Stainless steel wire	_____
4				
5				

Table 1 Mechanical performance

max working height	8.80mm	60 $\pm$ 20 fg
Min working height	8.30mm	80 $\pm$ 20 fg
Durability	10000cycle	

Notes:

- Dimensions shall be interpreted per ASME Y14.5M.
- Mechanical performance(See the table 1)
  - The force is the average of forces obtained when plunger goes downwards and upwards.
  - Warning: Working height are not permitted to be less than Min working height.
- Electrical performance  
Resistance: 30mOhm Max.Current rating: 2.0A
- RoHS compliant.

TOP-LINK

Top-Link Electronics Ltd.		Type	Customer drawing	Unit	mm	Weight	PART NUMBER	
B1	Update	2012/12/19	TOLERANCES UNLESS OTHER SPECIFIED	DWN:	Coi wanlu	APVD:	10164-1	
B	change spring	2008/04/21	0.0 = $\pm$ 0.15	CHK:		REL:	Top-Link Electronics	
A	NEW	2008/04/01	0.00 = $\pm$ 0.10	Angle: $\pm$ -	POGO PIN			Top-Link Electronics Ltd.
Rev.	Revision record.	Date.	SURF. TEXTURE: REMOVE BURRS. BREAK SHARP EDGES R0.05 MAX.DO NOT SCALE PRINT.			Name	Page 1/1	
			Scale 1:1	Size A4	DWG No.	C-101164	Rev.	B1